

greetings, friends

If 2023 was our Year of Knowing—emerging, taking stock, and planning forward—2024 was definitely a Year of Doing.

With a big to-do list in hand, we forged full steam ahead on a growing portfolio—58 active projects across this year, touching all service areas! We checked off major milestones, including finishing the first ever County-adopted green infrastructure plan in Embu Town, reopening a revitalised Vare Recreation Center in Philadelphia, and kicking off the first-of-its-kind rural shade equity master plan in the Eastern Coachella Valley. We engaged more than 12,000 community members in 2024, a testament that our work is truly an achievement of collaboration. Take a deeper dive into the stories of community resilience and collaboration this year on the following pages.

To support such expansive work, we've continued to improve a lot of internal processes. We upgraded technical systems for accounting, reporting, and communication; rethought governance structures to better support our teams and communities; and began to establish a strong impact framework. Our refreshed theory of change and a few of the metrics we are tracking are included in this report—more to come!

A heartfelt thanks as always to our colleagues, community partners, supporters, and boards for being with us throughout. Your ongoing support will be vital as we find ways to stick together, persevere, stand up, and build in the big year ahead.

Onward,



Chelina Odbert
CEO + Founding Principal



Joe Mulligan
Executive Director + Founding Principal

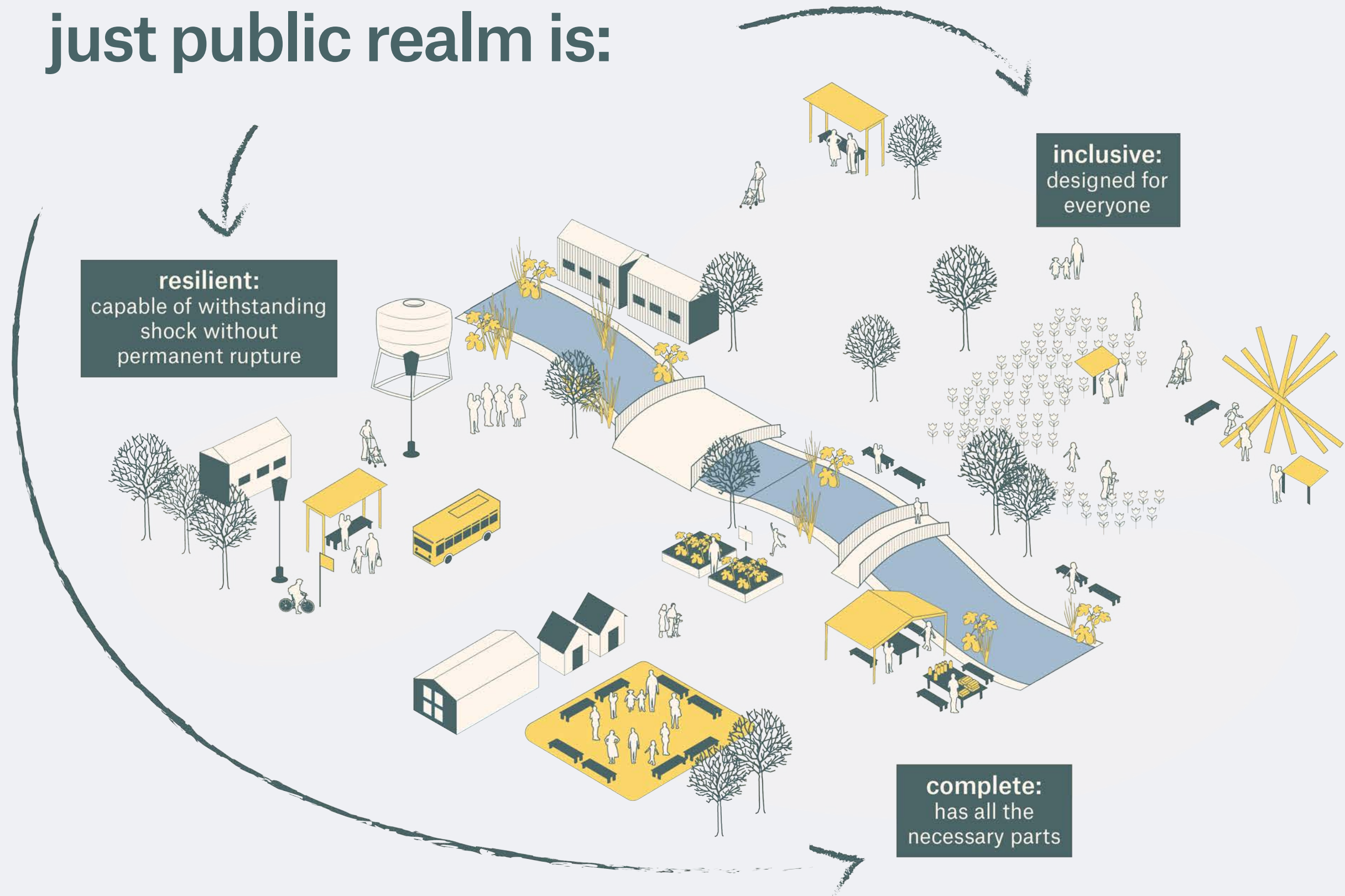


meet KDI

Kounkuey Design Initiative (KDI) is a team of diverse urbanists—landscape architects, urban planners, architects, community organizers, researchers, and engineers—united by our shared mission to build **a more just public realm.**

The lookout point at KDI's North Shore Community Park was featured on the cover of Landscape Architecture Magazine, August 2024 issue. Photo credit: Michael Todoran HAPS Agency.

a more just public realm is:

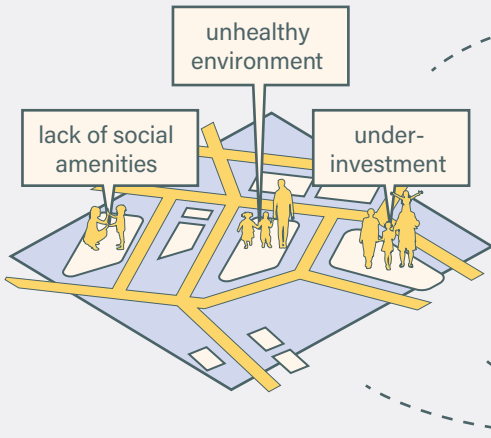


our theory of change

how we get to a more just public realm

who

We work with communities that have been overlooked and harmed through unjust planning and exclusionary design.



We have a broad reach and a particular focus on:

- Informal and low-income settlements in Kenya
- Disinvested neighborhoods across Southern California

how

We mobilize design, planning, research, and advocacy to advance community priorities and define longterm visions.

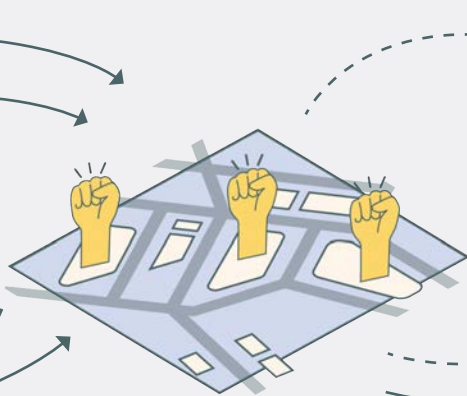


Our service areas:

- Design + build
- Plan + program
- Research + test
- Advocate + educate

what

We take on projects at all scales to tangibly improve quality of life for residents.

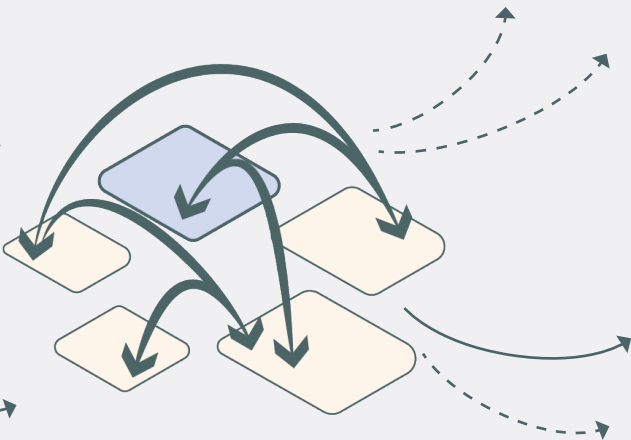


We create:

- | | |
|------------------------|------------------------|
| ▪ Parks | ▪ Marketplaces |
| ▪ Plazas | ▪ Streetscapes |
| ▪ People's plans | ▪ Educational programs |
| ▪ Green infrastructure | ▪ Urban experiments |
| ▪ Shade structures | ▪ Actionable research |
| ▪ Mobility plans | ▪ Policy outputs |

scale

We network our localized interventions and leverage their collective impact to undo systemic injustices in the built environment.



We build equity, opportunity, and health across cities and regions to improve public health, life expectancy, livelihoods, dignity, and quality of life.



a closer look at 2024

- ||||||| our team
- where we worked
- ≡≡≡ out and about
- our impact

our team

KDI is a women and BIPOC-led team that reflects the diversity of experience, perspective, thought, and talent found where we work. In 2024, we couldn't have accomplished anything without...

global leadership

Chelina Odbert, CEO + Founding Principal
Joe Mulligan, Executive Director + Founding Principal
Ian Leong, Managing Legal Director
Meagan Wyllie, Managing Finance + Operations Director

design

Jack Campbell-Clause, Sr. Principal
William Dibernardo, Sr. Principal
Lauren Elachi, Sr. Principal
Adriana Carías-Sison, Sr. Associate
Ross Hansen, Sr. Associate
Franklin Kirimi, Sr. Associate
Shirley Chebet, Associate
Louis Chiteri, Associate
Ellen Epley, Associate
Daniel Dominguez, Sr. Coordinator
Robert Douglass, Sr. Coordinator
Gloria Tanui, Sr. Coordinator
Leslie Dinkin, Coordinator
Rachel Kim, Coordinator
Cuahtemoc Hernandez, Intern
Tessa Wiley, Intern

planning

Jerome Chou, Sr. Principal
Naria Kiani, Sr. Principal
Sabrina Ohler, Principal
Eric Riley, Sr. Associate
Bosibori Barake, Associate
Carolyn Angius, Associate
Pascal Mukanga, Associate
Jorge Cáñez, Sr. Coordinator
Diana Muthoni, Coordinator
Briana Villaverde, Coordinator
Alejandra Martinez, Intern
Brenda Ngoya, Intern
Gianna Nguyen, Intern
Joseph Wahome, Intern

community

Regina Opondo, Sr. Principal
Christian Rodriguez Ceja, Sr. Associate
Christine Wandera, Sr. Associate
Pascal Kipkemboi, Associate
Ibrahim Maina, Sr. Associate
Kezia Ojal, Associate
Prisca Okila, Associate
Daniel Garcia, Sr. Coordinator
Martin Gil, Coordinator
James Kirika, Coordinator
Evans Muchiri, Coordinator
Valentina Rodriguez, Intern

research

Mathews Wakhungu, Principal
Linn Nilsson, Associate
Allan Ouko K'oyoo, Associate
Amos Wandera, Associate
Manshur Talib, Consultant

construction

Teresia Wanjiru, Associate
Wambua Nzioka, Coordinator

development + comms

Annelyn Oranga, Associate
Carol Feucht, Associate
Nora Healy, Sr. Coordinator
Silvia Kiama, Coordinator

operations

Monica Waga, Sr. Director
Jackie Shimba, Sr. Associate
Collince Makora, Sr. Associate
Lori Ward, HR Generalist
Christine Thompson, Bookkeeper
Jesus Payan, Sr. Coordinator

consultants

Melissa Kirby, Accountant
Jorge Sciupac, Strategy



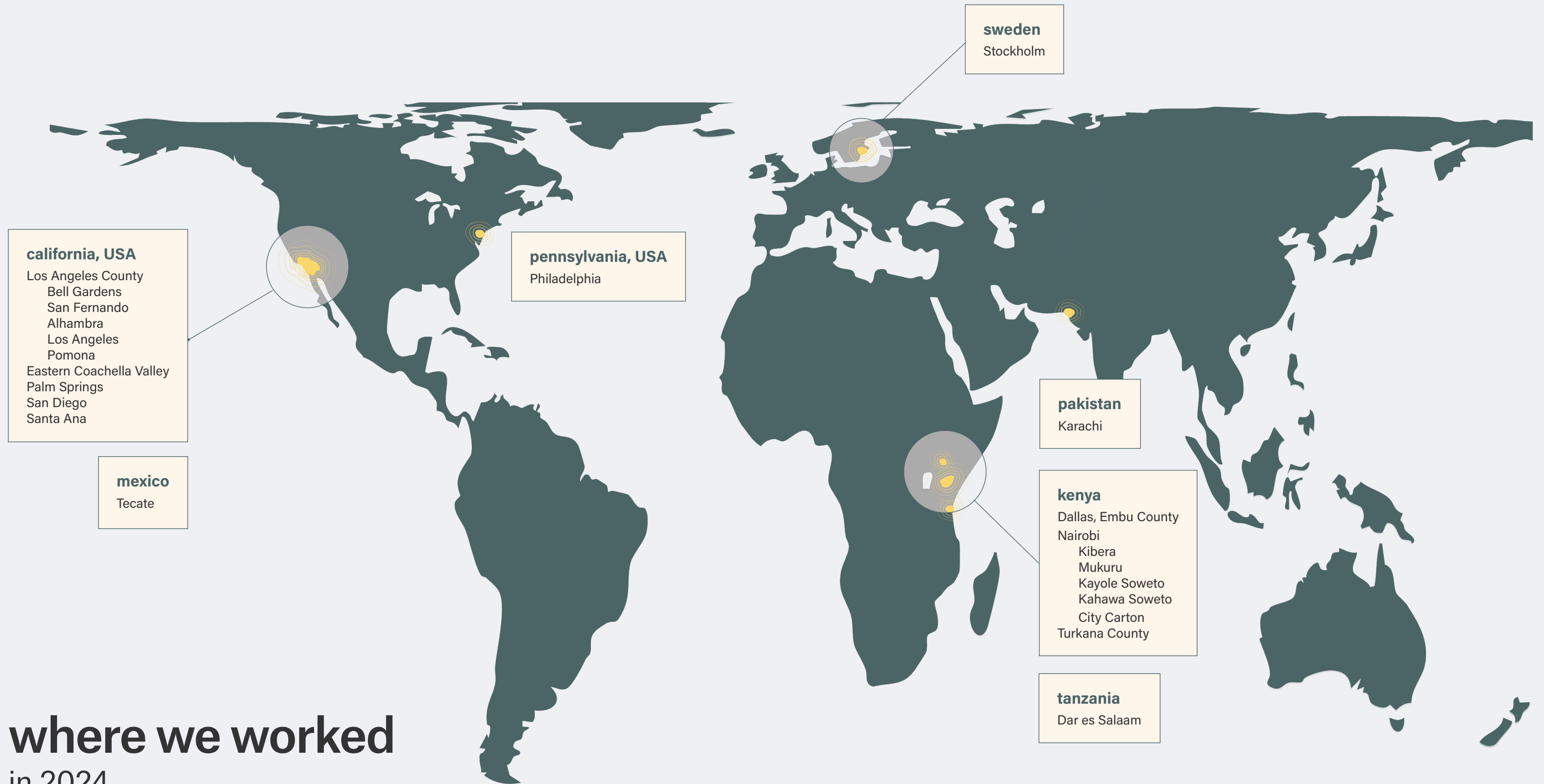
(Above) Sweden team.
(Right) Kenya team.



(Left) United States team.
(Right) LA summer interns.
(Below) Extreme heat team.



(Furthest left) KDI LA at Design Futures.
(Left) Kenya fun day.



where we worked in 2024

Founded in Nairobi in 2006, KDI has grown to four offices in three countries—Nairobi, Kenya; Stockholm, Sweden; Los Angeles, California; and Coachella, California, USA. All offices share a model of practice that follows a simple pattern: ask, listen, collaborate, and repeat. In 2024, we had the honor of partnering with three new communities in Tanzania, Mexico, and Pakistan.

The Hobo-Dyer equal area global map was designed to show more accurate size comparisons.



AWARDS

APA Los Angeles, Award of Excellence: Neighborhood Planning, Mar Vista Gardens Community Greening Plan

APA Los Angeles, Award of Merit: Opportunity + Empowerment, Our Resilient Rio Vision Plan

UN Habitat, Water as Leverage City Champion

World Habitat Award Bronze, Daraja

SELECT ACADEMIC ENGAGEMENTS

Design Futures, St Louis, MO, US, *Eric Riley, Rachel Kim, Robert Douglass*

Harvard University, Cambridge, MA, US, *Chelina Odbert*

Nuvoni Centre for Innovation Research, virtual, *Louis Chiteri*

The Ohio State University, Columbus, OH, US, *Lauren Elachi, Christian Rodriguez Ceja, Eric Riley*

University of California Davis, Davis, CA, US, *Lauren Elachi*

University of Toronto, Toronto, CA, *Chelina Odbert*

SELECT PROFESSIONAL CONFERENCES

American Society of Landscape Architects Conference 2024, Washington DC, US, *Arthur Adeya, Jerome Chou, Chelina Odbert*

American Planning Association of California Conference, Riverside, CA, US, *Christian Rodriguez Ceja*

Architecture Association of Kenya Urban Thinkers, Nairobi, Kenya, *Kezia Ojal*

Greater and Greener, Seattle, WA, US, *Jerome Chou*

International Meeting of Landscape and Garden, Bergamo, IT, *Arthur Adeya*

Public Artists in Development, Los Angeles, CA, US, *Ross Hansen, Eric Riley*

Walk 21, Lisbon, PT, *Jorge Cádiz*

SELECT INTERNATIONAL FORUMS

Innovations for the Blue Planet, Stockholm, SE, *Joe Mulligan*

Re:arc Architecture of Planetary Wellbeing, Bogota, CO, *Regina Opondo*

Rise Africa, Virtual, *Franklin Kirimi, Regina Opondo*

The Nature of Cities Festival, Berlin, DE, *Pascal Mukanga, Franklin Kirimi, Linnea Nilsson, Joe Mulligan*

UN Climate Change Conference 2024, Baku, AZ, *Regina Opondo*

UN Habitat Planning, Finance, and Economy's Community Practice, Virtual, *Shirley Chebet, Gloria Tanui*

World Urban Forum, Cairo, EG, *Jack Campbell Clause, Joe Mulligan, Regina Opondo, Mathews Wakhungu, Christine Wandera*

out and about
in 2024

We invest in the future of design, planning, and community development by writing about our work, hosting students and practitioners in our offices, teaching, lecturing, and giving talks around the world.

in 2024, KDI...

launched
4 public spaces

published
4 plans

worked on
58 projects

engaged
12,735 residents

Codesign workshop with middle schoolers in Torrance, CA for the Columbia Park Visioning Project.





selected projects

- ||||||| design + build
- research + test
- ≡≡≡ plan + program
- advocate + educate

design + build

21 active projects

We believe in the power of public space to create healthy, vibrant, and prosperous communities.

KDI works with residents to transform unsafe and under-used sites into “Productive Public Spaces.” From permanent parks and recreation centers to temporary vacant lot activations, each space integrates key amenities such as community gathering spaces , green infrastructure, and open spaces. In 2024, we renovated two public spaces in need of repair, Site 07 in the Kibera Public Space Network and Vare Recreation Center in Philadelphia.



co-building resilience along the ngong river

Location
Kibera, Nairobi, KE

Funder
re:arc institute

Partner
Kenyan Urban Roads Authority
Kibera United For Our Needs

In Nairobi, flood risk has surged. Rapid urbanization and climate change compound the city’s already fragmented approaches to rivers and drainage systems. Under-resourced and riparian neighborhoods, like Kibera, feel the impacts the greatest.

In April 2024, historic flooding tore through Nairobi’s riparian communities, claiming lives and property and hitting informal settlements the hardest. The rains destroyed a decade-old public space at Kibera Public Space Project Site 07 (KPSP07), a vital hub for safety, services, and community life developed by Kibera United For Our Needs (KUFON). Yet, this crisis became an opportunity to build back better.

The Kenya Urban Roads Authority (KURA), KDI, KUFON, and the wider community pooled efforts and resources to deliver a comprehensive solution. KURA constructed a new, flood-safe bridge. Meanwhile, KDI focused on strengthening flood defenses with gabion mattresses (wire mesh baskets filled with stone)—a seriously robust solution! With KUFON and the community, we reinstated the public space, which has returned to its green and vibrant state in record time.

In informal settlements, true progress comes from centering local knowledge and prioritizing solutions that stand the test of time—and the rising waters. In the season following reconstruction, rains provided a test of this new intervention. While other infrastructure along the river suffered significant damage, this site has successfully managed the flooding.

In partnership with KDI, the Kenyan Urban Roads Authority built back the bridge to withstand greater flood risk.





Intense flooding in early 2024 destroyed the existing community space and bridge.



This photo from December 2024 shows the gabbion mattresses, a solution to mitigate serious flood risk, along the embankment. The community space was rebuilt with an emphasis on safety.

vare recreation center

Location
Philadelphia, PA, USA

Funder
Philadelphia Department of
Parks and Recreation

Partners
Make the World Better
SALT Design Studio
Tiny WPA

Located in Grays Ferry, a South Philly neighborhood fraught with the legacy of segregation, sits Vare Recreation Center, a cherished community space for over 100 years. Generations of sports games, after-school activities, and disinvestment took a toll on the integrity of the building and surrounding green space, prompting the City to rebuild. KDI led the landscape architectural scope alongside a team led by Make the World Better, a Philadelphia community-based organization, to reimagine this community hub with residents.

Through the engagement process, the community shared the vital role of a front ‘stoop’ –a set of stairs leading up to the front door of a house, which serves as an informal meeting space between friends and neighbors. We worked alongside these residents to incorporate this tradition into the site design with a ‘Community Stoop’ running alongside the recreation center to act as a threshold space between different programs and encourage gathering.

The new design for Vare includes an ADA-accessible playground, a community plaza with a splash pad, a full-sized football field, basketball courts, an outdoor classroom, and community artwork woven throughout. Project Backboard and Tiny WPA joined the design team to add murals to the basketball court and community-built seating and gathering spaces for the park. The renewed Vare Recreation Center opened to the public in 2024 to much celebration.

This island themed playground includes play spaces for different age groups. The younger kid area is shown on the right. Photo credit: Make the World Better.



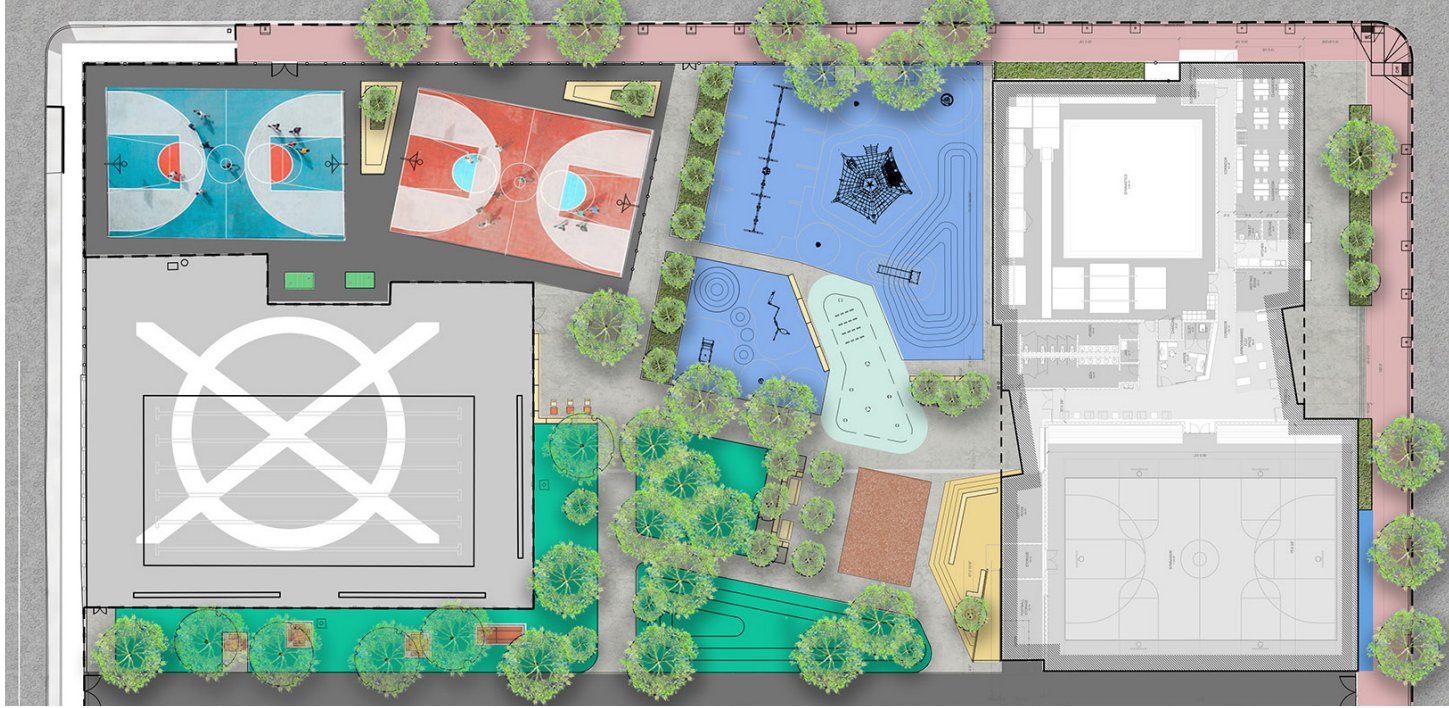


(Top left) Residents participate in an codesign workshop for the new playground.

(Bottom left) Island themed playground features a sensory dome, which provides opportunities for both physical and social-emotional play.

(Top Right) Ribbon cutting on the stoop. Photo credit: Meliora.

(Bottom right) Site plan.



research + test

11 active projects

**We believe in co-producing
knowledge to catalyze social
change.**

Many of the places where we work lack adequate data. Through community-engaged research projects, we fill clear gaps in knowledge. We share this knowledge with policy makers and residents so they can make informed decisions about priority needs and effective solutions. The following projects are a glimpse into two Research + Test projects that touch on nature based solutions and the future of commemoration.



listen, learn, leap

Location
Nairobi, KE and Dar es Salaam, TZ

Funder
UK Research Innovation
The UK Foreign Commonwealth and Development Office

Partners
University College London
Ardhi University
The Centre for Community Initiatives
ICLEI Africa

Nature-based solutions (NbS), like planting trees and restoring wetlands, offer the potential to support resilience and mitigate risk in the East African urban informal settlements hit hardest by climate change. However, their application in these contexts is not well understood and planning practices have historically left out crucial local voices in their planning, implementation, and evaluation.

The action research project Listen, Learn, and Leap (3L) explores how people living in urban watersheds are already working with nature to build local resilience, while uncovering the barriers and opportunities for scaling-up community-driven NbS in the East African cities of Nairobi, Dar es Salaam, and beyond.

Kicking off the project in 2024 with the Listen phase, we engaged with different stakeholders, including women, young people, civil society, and local government, as we conducted a rapid assessment of NbS efforts across Nairobi’s watersheds. Through this process, we mapped 51 initiatives, many of which we had not previously engaged with, significantly enriching our understanding of community-driven NbS in Nairobi.

Next up is Learning by doing, as we work with women and young people living in the watersheds to co-produce NbS, methodologies, and knowledge to institutionalize and scale up equitable and sustainable NbS in East African informal settlements.

Urban agriculture by the Komb Green Solutions CBO in Korogocho, Nairobi. One of the initiatives visits by the 3L team during the “Listen” phase.





3L teams from Kenya, Tanzania, South Africa and the UK draws people and nature concepts during the inception week in Nairobi in September.



Team visit to community led NbS initiatives in Dar Es Salaam in September.

future histories: park history toolkit

Location
Los Angeles, CA, USA

Funder
The Mellon Foundation

Partners
Los Angeles County Department
of Parks and Recreation

Public monuments are designed to reflect our shared history, yet many tell an incomplete story of our communities. Across Los Angeles County, diverse histories and lived experiences remain uncelebrated and untold in our public spaces. In 2024, the Los Angeles County Department of Parks and Recreation (DPR) and KDI launched Future Histories, a project to re-imagine how DPR commemorates histories embedded in parks across the entire County Parks system.

With support from the Mellon Foundation, KDI and County staff are developing a Commemorative Toolkit, a set of practical tools that can be deployed at any park, existing or planned, to ensure representative and inclusive stories are incorporated in the park’s designs. This year, we created the Park Audit tool, which DPR can use to assess commemorative elements and histories in any given park, and identify the presence of (un)known park or community histories.

In the year ahead, KDI will complete the Community Histories Engagement Guide and Park Staff Commemorative Stewardship and Programming Curriculum. Currently in development, the Engagement Guide will provide tools to engage residents to share untold community histories and to design more dynamic physical elements that tell those histories. To build capacity to implement these new processes, KDI and DPR are working closely to create a staff curriculum around stewarding and programming commemorative spaces, monuments, and memorials in County parks. As the final step in Phase 1, the team will identify up to five priority sites in county parks in which to build commemorative landscapes.

This project builds on a growing body of commemorative work at KDI, including the in-progress memorial at Ruben Salazar Park in East LA and recently finished mosaic at Jackie Robinson Park in Sun Village (pictured right). Through Future Histories, we are taking the lessons learned from these projects and codifying a community-driven process for commemoration in parks systems.

KDI and Clockshop staff and artist April Banks (second from right) at the opening of a new mosaic entitled “The Light of Many Suns” in Jackie Robinson Park in Sun Village, CA.





(Above) This historical photo of the groundbreaking ceremony of Jackie Robinson Park in 1963 features the leaders of the Women's Club on the right who raised money for the creation of the park.



(Right) Artist April Banks interpreted this photo for the mosaic mural.



Community members at the Juneteenth opening of the signage trail that tells the story of Sun Village and the park.

plan + program

11 active projects

**We believe community-led planning
is key to sustainable and equitable
change.**

We work with residents to create plans that advance their long-term visions for equitable communities. To activate those plans, we help residents design and implement programming that generates income, energizes culture, builds community capacity, and brings our Productive Public Spaces to life for years to come. Among our four finished plans this year, we are highlighting a neighborhood plan from the United States and the Dallas Green Infrastructure Plan from Kenya.



dallas ASILI

Location
Dallas, Embu County, KE

Funder
German Agency for International Cooperation
SwedBio

Partners
The Covenant of Mayors in
Sub-Saharan Africa
Dallas Community
Embu County Government

Award
Water as Leverage City Champion, UN
Habitat

This year, KDI had the honor of producing the first Green Infrastructure Plan to be adopted by a County Government in Kenya—Dallas ASILI (Adaptation Solutions, Inclusive Locally-led Infrastructures). Like many East African informal settlements, Dallas, in Embu County, faces severe flooding, inadequate infrastructure, and increasing climate risks, which traditional grey infrastructure has not adequately addressed.

Dallas ASILI represents a ‘Rivers & People’ approach to urban resilience in Kenya’s informal settlements, which all starts with community participation. The KDI team organized placemaking activities, trainings, workshops, and knowledge exchanges to build local capacity to understand urban climate risks and sustain and expand green infrastructure initiatives. We trained community data collectors in mobile-based surveying, field note-taking, and physical mapping to assess existing infrastructure, identify climate risks, and locate opportunities for nature-based solutions (NbS). We paired our analysis with community visioning to form a plan with three areas of focus—stormwater management, public green space revitalization, and climate adaptation.

We were honored that this project was recognized as part of the Water as Leverage City Champion Challenge, affirming that Dallas ASILI sets a new precedent for integrating NbS into local planning and policy in East Africa.

County Secretary Amy Ruria signs on to Kenya's first community-led Green Infrastructure Plan.





Natural assets, like the wetlands pictured (above and right), are at the center of Dallas settlement and centered by the Plan which commits to these spaces being restored and protected.



tramview heights neighborhood plan

Location
Palm Springs, CA, USA

Funder
The City of Palm Springs

Partners
Urban Palm Springs
Terra Nova Planning + Research

To an outsider, Palm Springs, California is a resort city known for mid-century architecture, retired snowbird community, and wealthy tourists. However, locals know that this is an incomplete story of Palm Springs. In the mid-twentieth century, as tourism hit a high point, the City conducted forced removals and clearances of the downtown tribal land that Black and Latino residents lived on. Upon losing their homes, wealth, and community, many of these residents relocated to the city's northern neighborhood.

Today, city officials and the Black community are working toward a more just future for Palm Springs, which includes both reparations and equitable neighborhood investment. As part of the latter initiative, KDI joined a team with Urban Palm Springs and Terra Nova Planning and Research to lead a dynamic engagement process for community members to reimagine their vision for the North Palm Springs Specific Plan.

KDI led a series of workshops and pop-ups where residents were asked for the first time to directly engage in the priorities and vision for their neighborhood's specific plan. One of the first decisions the community made was to change the name of the plan from College Park, a reference to an abandoned development plan by a local college, to Tramview Heights, the main road connecting most of the neighborhood.

Residents used the engagement process to connect with other neighbors and directly engage with the city around their feelings of neglect and underinvestment. The Specific Plan, infused with community vision, will reset long term goals and map a path toward greater neighborhood cohesion, vitality, and long-term economic health.

During this public workshop, community members prioritized their favorite land use arrangement for the specific plan.





Dieter Crawford of Urban Palm Springs (right) leads residents through the plan area map at the first workshop.

advocate + educate

11 active projects

**We believe community voices are
indisposible in advancing equity.**

We work with residents to advocate for changes to their local governments that prioritize equitable development, and along the way, we help them grow their capacity to lead these campaigns on their own. We foster the next generation of community-based designers, educate decision makers about participatory planning and design, and advocate for the policies standing in the way of equity in the public realm. This year, we are highlighting our work that connects communities and their environments through education and advocacy.



mar vista gardens youth program

Location
Los Angeles, CA, USA

Funder
Baldwin Hills & Urban Watershed
Conservancy

Partners
The Boys & Girls Club Mar Vista Gardens
Nicole Ucedo, Teaching Artist

Since 2021, KDI has been working with the community of Mar Vista Gardens, the only public housing project on the Westside of Los Angeles, to create a Community Greening Plan and redesign key public spaces on the campus. To keep local youth engaged with the greening process during the design phase of the project, we partnered with the Boys and Girls Club in Mar Vista Gardens to lead a five-week youth video and community documentation training program during their summer break.

The sessions were led by UCLA Film Archivist and teaching artist Nicole Ucedo, who taught students interviewing and video production skills, Super 8 film processing, and community storytelling techniques. Our training sessions culminated in an intergenerational video and zine celebrating residents’ existing greening efforts. Students interviewed and interacted with local residents leading greening efforts on the MVG campus, speaking with them about their relationship with the community and climate change.

The student’s short film “The Forever Green Gardens” and zine, used multiple capture formats to profile pillars of the MVG community, documenting their contributions to stewarding the green spaces and using them as spaces for community to access healthy food and learn skills, and meet neighbors. Students were able to see how these resident-led efforts fit into the larger planning and design processes to green their public housing campus.

Master gardener of the Boys and Girls Club garden gives youth a tour of the vegetable garden on campus.





(Top) Group photo of the Boys and Girls Club Garden Cohort.



(Right) A program participant uses a Super 8 camera to record footage for their film.



(Left) Teaching artist Nicole led a cyanotype workshop with found objects.



(Top) Youth test a digital video camera with selfies.

(Bottom) Youth learn about still film photography in the community garden.

emphasising ecosystems, elevating people

Location
Nairobi, KE

Funder
Global EbA Fund by IUCN and UNEP
The German Federal Ministry for the Environment

Partners
ICLEI Africa
UN-Habitat

Since KDI's founding, Nairobi's Ngong River, which runs through Kibera and several other informal settlements, has been a central thread to our work. While the river holds many real and potential benefits, it also exposes these riparian communities to increasing risk in the face of climate change and environmental degradation.

In 2023, KDI kicked off the Emphasising Ecosystems, Elevating People (3EP) project as one step in a community-driven regeneration of the Ngong River Basin. 3EP sought to demonstrate how Ecosystem-based Adaptation principles can be incorporated at different scales of participatory planning, neighborhood to city, to mitigate climate risks, enhance biodiversity, and strengthen community resilience.

We started the project with a social and ecological assessment of the whole Ngong river basin, multi-stakeholder visioning for the future of the river, and resident capacity-building workshops. We got creative, using tools like Minecraft, to engage the community in visualizing potential riverside interventions. Then, along with community members from Kibera, Mukuru, and Kayole Sweto, we began co-developing Rivers and Peoples Vision Plans for each community and designing catalytic interventions.

When the planning was interrupted by the catastrophic flooding of April and May 2024, we had to adapt quickly and shifted toward advocacy and further capacity-building. We co-wrote a community manifesto in Kibera along a the Rivers and People Plan to support community-led regeneration efforts.

Despite these challenges, 3EP has played an important role in shaping sustainable river regeneration efforts, influencing policy discussions, and serving as a model for integrating NbS and advocacy in urban river regeneration beyond Nairobi.

A community group member stands proudly in front of a photograph highlighting their work at the exhibition launch of the River Ni Life competition celebrating community-based organisations restoring nature along Nairobi's rivers.





(Above) Residents taking part in constructing drainage channel to direct stormwater toward the Ngong River in Mukuru Kwa Reuben, 2024.



(Below) Community consultations in Kibera as part of the development of the Rivers + People Vision Plan for Kibera, 2024.



governance

- ||||||| finances
- boards of directors

funding partners in 2024

Thank you to our generous supporters and funding partners, and to the individuals who contribute in big and small ways. Our work is infinitely stronger with you.

Kenya

Adaptation Research Alliance, South South North	International Society for Urban Health	Royal Academy of Engineering
Agence Française de Développement	Institute for Development Studies	Slovak Agency for International Development Cooperation
British Academy	International Union for Conservation of Nature	SwedBio
German Agency for International Cooperation	Jeffrey Cook Charitable Trust	UK Research and Innovation
Global Ecosystem Based Adaptation Fund	Lloyds Register Foundation	UNEP
Individuals and Family Foundations	People Powered	University College London
International Institute for Environment and Development	Kyeema Foundation	UN Habitat
	Open University	Wellcome Trust
	ReArc Institute	WISER

United States

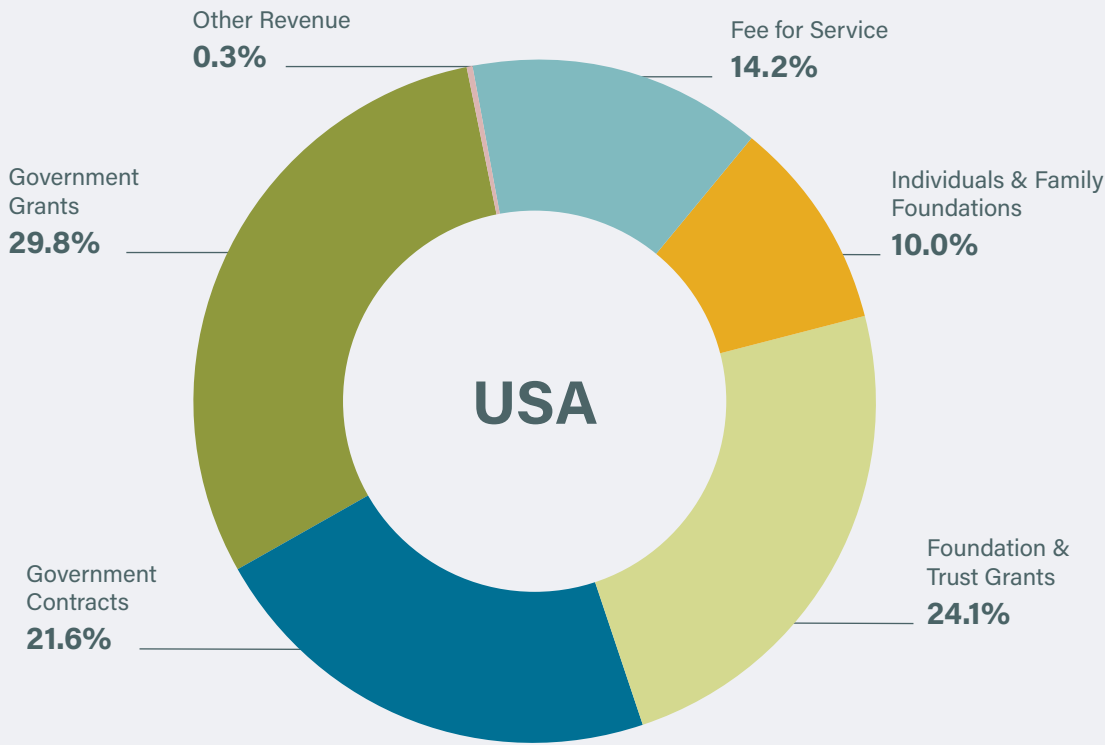
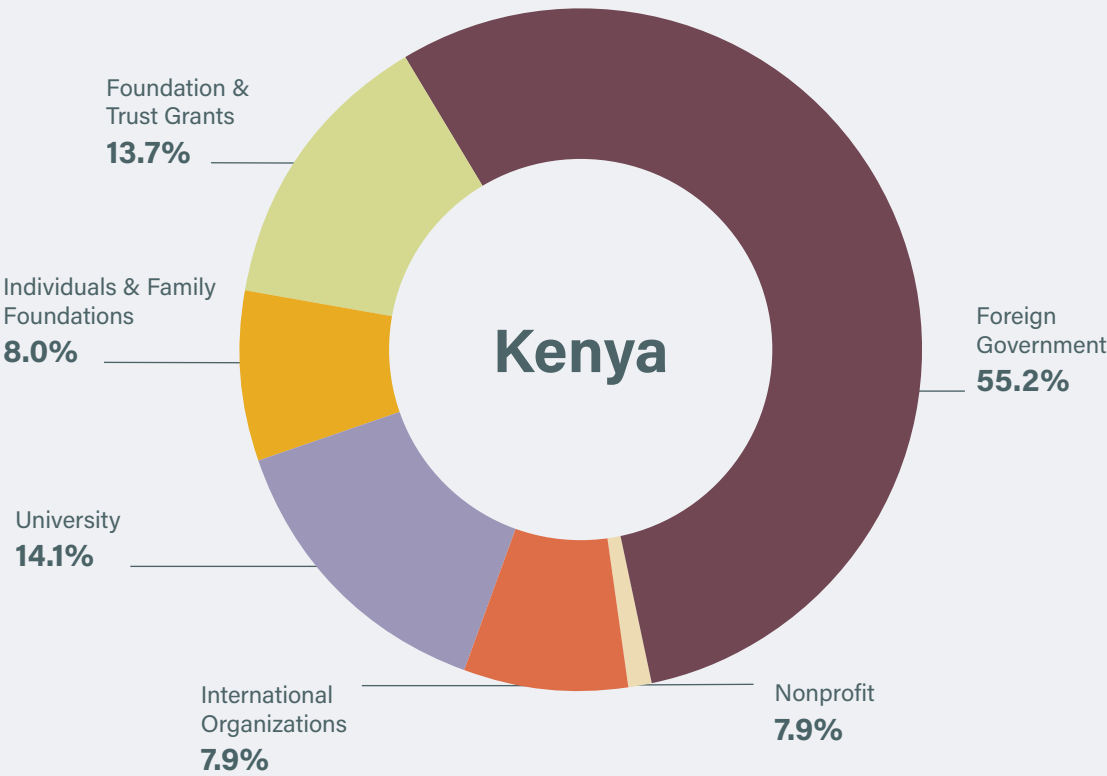
Abode Communities	Climate Innovation	San Gabriel and Lower Los Angeles Rivers and Mountains Conservancy
ALTA Planning + Design	Grayscale Collaborative	Santa Monica Mountains Conservancy
Annenberg Foundation	Harvard Graduate School of Design	Taller De Arquitectura
Baldwin Hills and Urban Watersheds Conservancy	Inclusive Action for the City	Terra Nova Research + Planning
Buro Happold	IoD Parc	The California Endowment
City of Coachella	Koreatown Youth and Community Center	The Music Center
City of Long Beach	Long Beach Community Foundation	The Ohio State University
City of Palm Springs	Los Angeles County Department of Parks and Recreation	The Rosalinde & Arthur Gilbert Foundation
City of San Diego	Make the World Better	Torres Martinez Desert Cahuilla Indians
City of San Fernando	Mellon Foundation	Tree People
City of Tecate	National Endowment for the Arts	University of Arkansas
City of Torrance	Office42 Architecture	University of California Los Angeles
Coachella Valley Mountains Conservancy	Pacoima Beautiful	University of Illinois
Design Futures Forum	Public Health Advocates	University of Washington
Fehr + Peers	Riverside University Health System	Wildlife Conservation Board
Governor’s Office of Land Use and	Robert Wood Johnson Foundation	



Tendo (US Board) attends the opening of a new moasic at Jackie Robinson Park.

A special thanks to our individual donors who supported KDI in 2024.

funding sources in 2024



our boards

KDI is led by our two boards of directors, who provide critical strategic planning to our organization.

kenya board

Arthur Adeya
Robyn T. Emerson
Rose Muema
Joe Mulligan
Carol Owala
Caroline Ray (Advisory Member)

united states board

Anthony Foux
Kevin Heneghan
Claudia Kahn
Steve Malkenson
Tendo Nagenda
Chelina Odbert
David Valentine



(Top) Robyn Emerson (KE Board) and Eng. Shammah Kiteme (President of the Institution of Engineers of Kenya) during the 3IF Continuing Professional Development masterclass.

(Bottom) Chelina, Claudia, and Tendo of the US board host a KDI Fundraiser in September 2024.



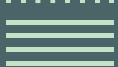
gracias



tack



asante



thank you for being a friend